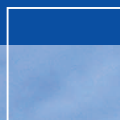


Regular eye examinations are essential for good sight



In our continued efforts to bring the most advanced technology available to our patients, we are proud to announce the inclusion of the **optomap**® Retinal Exam as an integral part of your eye exam today.

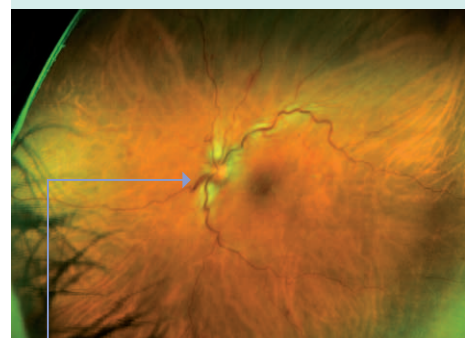
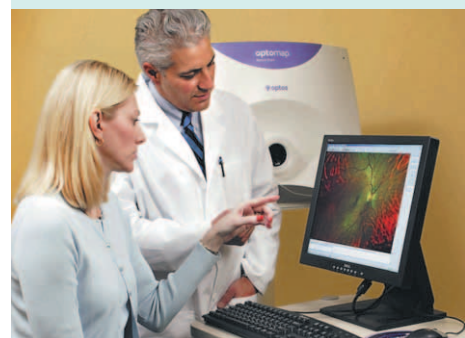
Many eye problems can develop without warning and progress without symptoms. Early on, you might not even notice any change in your vision. However, eye conditions such as macular degeneration, glaucoma, retinal tears or detachments, as well as other health problems such as diabetes and high blood pressure can be detected with a thorough retinal examination of the retina. The retina is the part of your eye that catches the image of what you are looking at, similar to the film in a camera.

An **optomap**® Retinal Exam provides:

- A scan to confirm that your eye is healthy or to assist in the detection of eye disease.
- An overview or map of the retina, giving your doctor a more detailed view than can be achieved by conventional methods.
- The opportunity for you to view and discuss the **optomap**® images of your eye with your doctor at the time of your exam.
- A permanent record for your medical file, enabling your Doctor to make important comparisons year on year if potential problems show themselves at a future examination.
- The **optomap**® Retinal Exam is fast, easy, and comfortable.

Please note: The **optomap**® Retinal Exam may be a “non-covered service” with your health plan which means that you would be responsible for the charge. Your doctor strongly believes the **optomap**® Retinal Exam is an essential part of your comprehensive eye exam and highly recommends it for all patients every year.

Your Eye Health Check with **optomap® -
to ensure your overall wellbeing and to give you peace of mind**



Central veinocclusion

optomap®
Retinal Exam